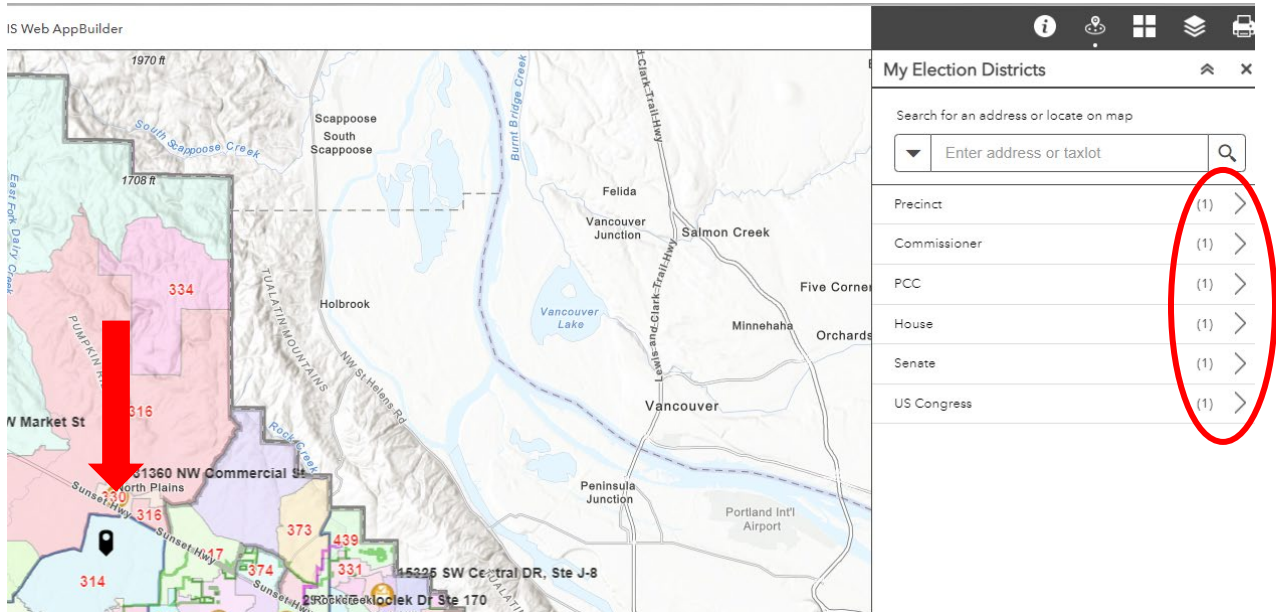


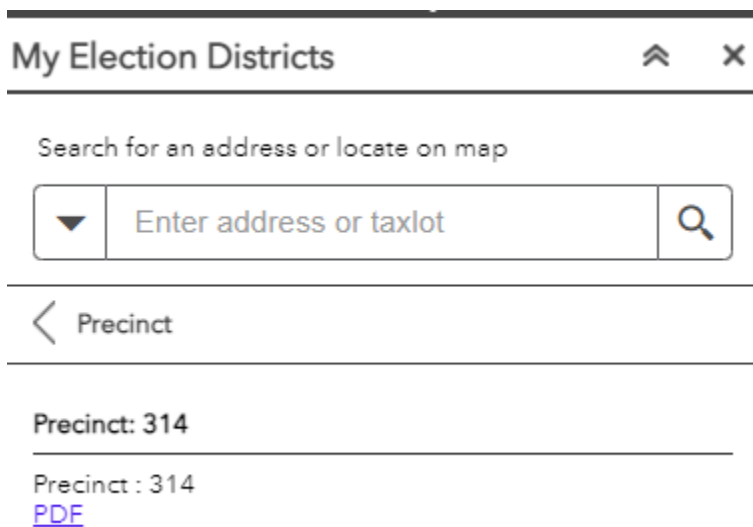
Printing Maps From Washington County Election Boundary App

Downloading PDFs

You can download PDFs from the app by clicking on the location of the area you want to see. This will bring up a list of layers on the right side of the screen



Click on the > symbol on the individual layer to expand that single layer

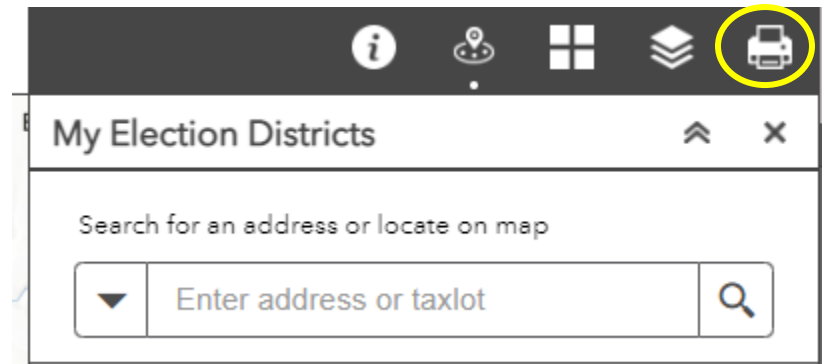


The PDF link to open the PDF. To print the entire PDF, you need to download it. Depending on the browser you use (Chrome is best), there should be a download button. Once downloaded, you can print

from your computer. Some maps are quite large and will require a plotter to see all the details. Shipping/printing shops like Kinko's or FedEx should be able to print from the large PDFs.

Using the print widget

You can also print custom maps from the app using the print widget



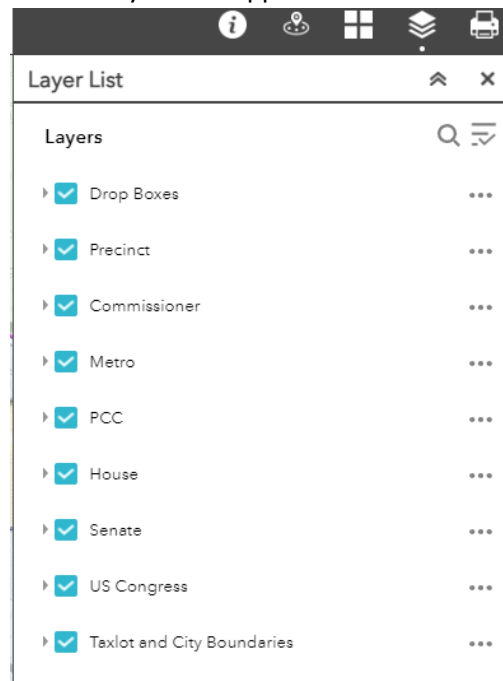
Before you click on the widget:

1. Adjust the map to the area you want to print.
2. Select the layers you want:

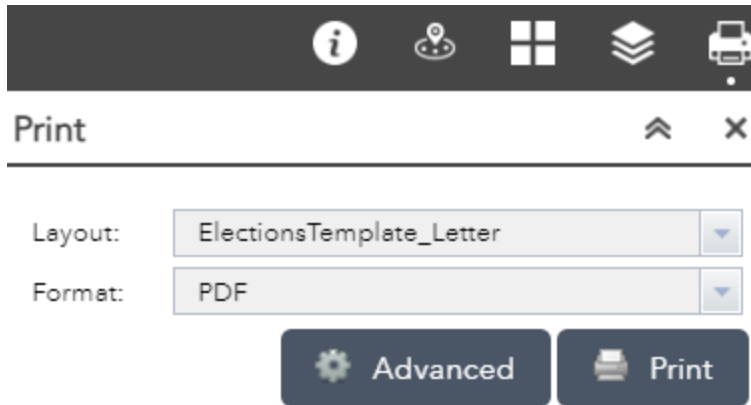


Click on the layers widget

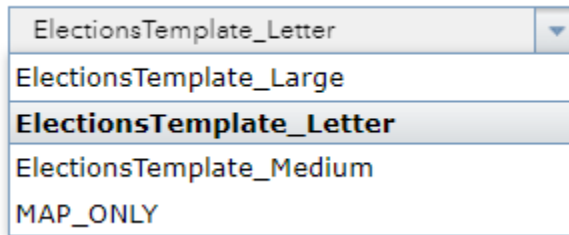
A list of layers will appear- Uncheck the layers you don't want to appear on the map.



3. Click on the print widget to open the print menu



On the layout drop down, there are 4 choices of templates



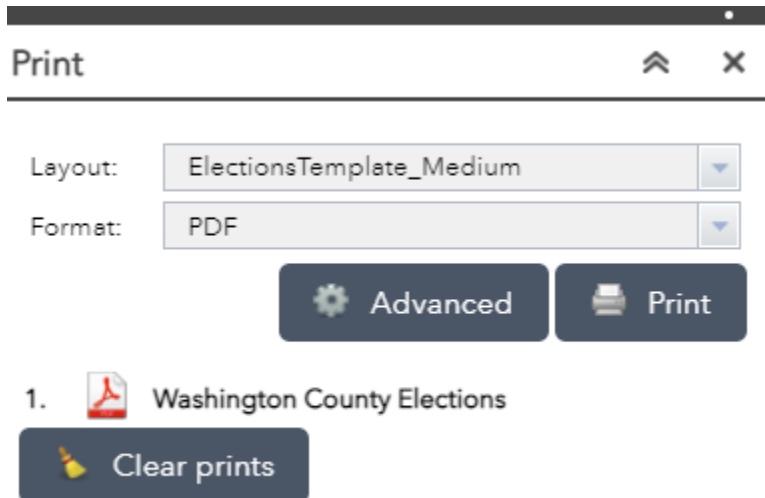
Letter is 8 ½ x 11 inches

Medium is 24 x 18 inches

Large is 48 x 36 inches

Map only is just a screenshot

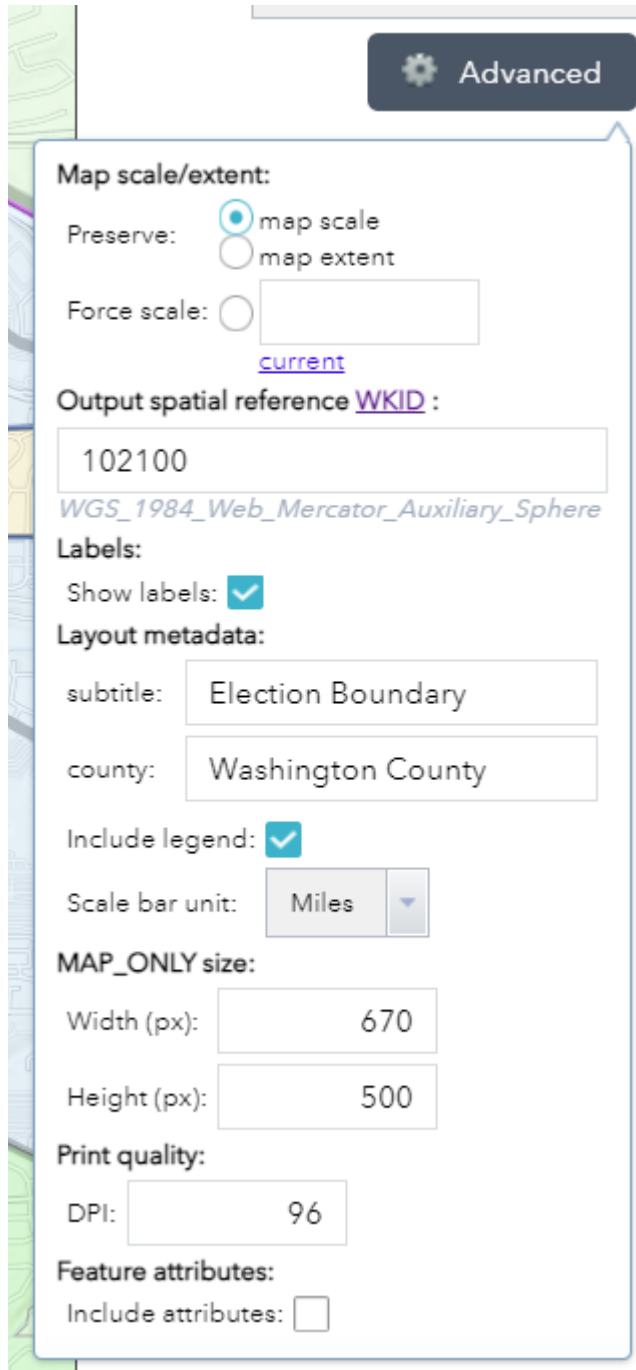
4. Select the template you want and then click Print
5. A PDF will be created



6. Click on the PDF to see the map
7. You may have to play with adjust the layers, map, and print template

Advanced Settings

Other settings can be adjusted to further customize the map. You may have to try some of the settings to get the exact map you want. On large maps, using a forced scale of 200,000 gives a good overview of the entire county.



Advanced

Map scale/extent:

Preserve: map scale
 map extent

Force scale: [current](#)

Output spatial reference [WKID](#) :

WGS_1984_Web_Mercator_Auxiliary_Sphere

Labels:

Show labels:

Layout metadata:

subtitle:

county:

Include legend:

Scale bar unit: ▼

MAP_ONLY size:

Width (px):

Height (px):

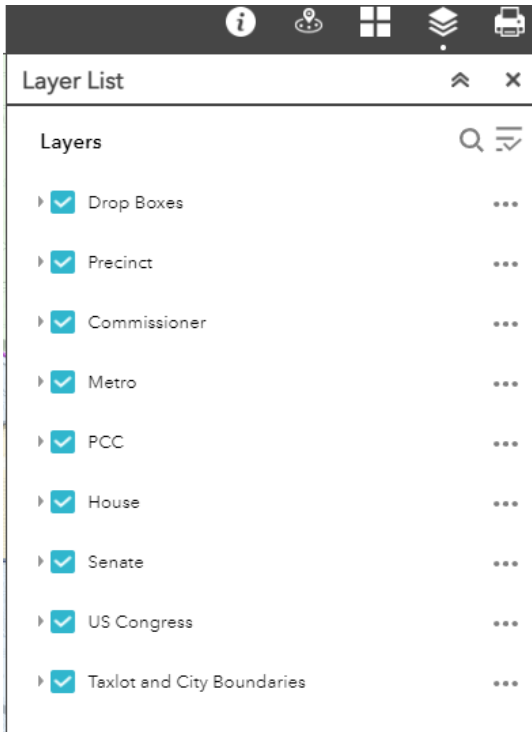
Print quality:

DPI:

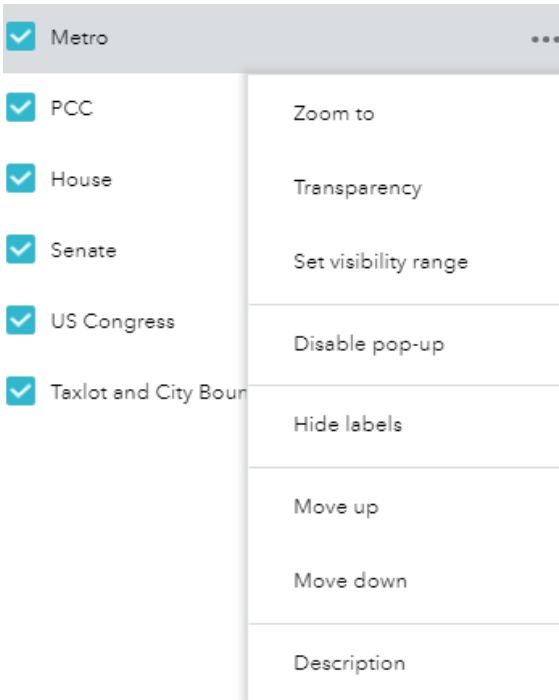
Feature attributes:

Include attributes:

You can also adjust layers by moving them up or down or adjust transparency



Clicking the 3 dots will bring up a menu



This will allow you to move layers up or down relative to it's current position and adjust the transparency.